



ARGOSY UNIVERSITY®

STUDENT NEWSLETTER

Vol.8, No. 3

“Excellence is our Standard”

October 6, 2008

At Argosy University, our passion is teaching and learning. We develop professional competence, provide opportunity for personal growth, and foster interpersonal effectiveness. Students succeed because our university community engages and supports them.

Faculty in the News

It gives us great pleasure to salute the accomplishments of our own Dr. Pam Garcy, Clinical Psychology Adjunct Professor. You may already know that Dr. Garcy is the author of **The Power of Inner Guidance: Seven Steps to Tune In and Turn On**. However, **Power of Inner Guidance** has reached #1 bestseller in Nonfiction Paperback.

It was #4 in all nonfiction books and #9 in all books.

It reached #1 in the following categories:

Nonfiction Paperback
Religion
Special education
Education and teaching
Psychological self-help
Personal growth
Emotional healing
Self-improvement/relationships
Self-improvement

Congratulations, Dr. Garcy!

Graduation Updates

Letters to all those graduating and walking for spring, summer and fall have been sent. The ceremony will be on Saturday, October 25th at 11 a.m. at the Hotel Intercontinental in Addison, TX. Those walking in the ceremony are required to be at the hotel at 9 a.m. on that

day for rehearsal and other information. If you have already received your diploma, please bring back your green folder that the diploma came in so we can hand it back to you at the ceremony. Any questions, please contact Shalon Morris or Jo Moody.

More New Programs Added

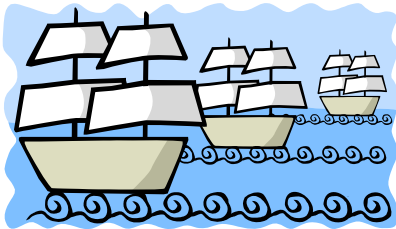
We're Growing Again!

Argosy University, Dallas is pleased to announce the approval of several new programs!
New Programs, Certificates and Concentrations

- Doctor of Business Administration with concentrations in:
 - Accounting
 - Global Business Sustainability
 - Information Systems
 - International Business
 - Management
 - Marketing
- Doctor of Education in Counselor Education and Supervision
- Doctor of Education in Educational Leadership
- Master of Arts in Industrial Organizational Psychology
- Professional Graduate Business Certificates in:
 - Corporate Compliance
 - Finance
 - Fraud Examination
 - Healthcare Administration
 - Information Systems Management
 - International Business
 - Management
 - Marketing
 - Public Administration
 - Sustainable Management



- Advanced Professional Graduate Business Certificates in:
 - Accounting
 - Global Business Sustainability
 - Information Systems
 - International Business
 - Management
 - Marketing
- Extended Fundamentals of Management Certificate



Columbus Day is Monday, October 13th. Way to go Chris!

IRB Committee

The IRB committee will be meeting on the 3rd Wednesday of each month. Your IRB proposal must be submitted by the last day of the preceding month for your proposal to be reviewed by the scheduled meeting (e.g. to be eligible for review at the November meeting your proposal must be submitted by Oct. 31st).

There is a plastic file box located at the desk in the lobby of the faculty offices on the 4th floor marked IRB. Your proposal should be placed in this box. Also, inside the box is a sign-in sheet that you must fill out.

Notice of the committee's decision will be placed in your school mailbox within ten days following the meeting. An electronic copy will be emailed to your student email account.

Your proposal must be signed by you and your research chair. Your school email address must be on the first page of the proposal.

Please watch for more info on this process. We'd all like to get it right the first time.

David L. Hargis, Ph.D., Chair-IRB Committee

Student Services Updates

Correct Contact Information?

Do we have your correct contact information on file? If your address or phone number has changed, we have no way to contact you in the event of a class cancellation. Please fill out a change of status form and submit to student services at your earliest convenience.



Federal Work Study Positions

Anyone interested in applying for these jobs must first obtain a FWS packet from Karen Wilkerson in Student Finance or pick up a packet on the 4th or 5th floor reception areas.

Library:

Library Student Assistant

Counseling

Clinical Training Support Specialist-only PsyD students are eligible and need to be available for a full year. Responsibilities include processing training applications, maintaining training files and databases, and administering the comprehensive exam for the counseling program. 20 hours per week available.

Clinical Psychology

Teaching Assistants for Projective Personality Assessment Course (TA must have completed this class)

Academic Resource Center

2 positions available



If we magnified blessings as much as we magnify disappointments, we would all be much happier.

Little Known Facts

1. An ostrich's eye is bigger than its brain.
2. If you toss a penny 10,000 times, it will not be heads 5,000 times, but more like 4,950. The heads picture weighs more, so it ends up on the bottom.
3. All porcupines float in water.

PsyD Students

Have you joined the Texas Psychological Association yet? Join now.

Student Membership: Requires current enrollment in a graduate or undergraduate program, in an accredited college or university, leading to a degree in psychology. (\$30.00) for students to join. Proof of current enrollment required (letter from faculty advisor or copy of current semester paid tuition receipt). Renewal/application is not complete without proof of current enrollment. It may be mailed to PO Box 1917, Manchaca, TX 78652 or faxed to 512-255-1642 or contact Sherry Reisman at membership@texaspsyc.org and give her the name and contact information for your faculty advisor so that she may contact him/her.

Member Services include Professional Services, Legislative Support, Colleagues and Leadership.

Check out their website at:
<http://www.texaspsyc.org/index.cfm>

The annual TPA Convention will be in Austin this year, November 20-22nd. We encourage you to attend.

Discounted online rates	After 9/16 thru 10/30	Late-After 10/31
TPA member 2-3 days	\$265	\$295
Student member 2-3 days	\$95	\$125

Admissions Department

As always, Argosy University, Dallas Campus is recruiting for competitive scholars like you! If you know of someone who may be interested in any of our programs, please contact the Office of Admissions at 214-459-2227 or AUDadmis@argosy.edu.

Staff and Faculty of the Month

Congratulations to **Paula Tate**, HR Coordinator and **Dr. Wayne Smith**, Business Program Chair, for being awarded the Staff and Faculty of the Month for October. This month we received a record number of nominations, so please keep them coming! Nomination boxes are located on the 4th floor by the AA reception area and on the 5th floor in the reception area. All full time, part time and adjunct faculty are eligible for nomination, as well as all full time, part time and temporary staff.

Here are some of the many wonderful comments we are hearing about our Faculty and Staff:

- “This professor is great. We need more instructors like this.”
- “I really enjoy this instructor’s lectures. He is the epitome of a great professor.”
- “She always goes above and beyond for students.”
- “She has supported me from the beginning and is a superb role model.”
- “He makes you stretch your mind.”
- “She makes students feel welcome and connected.”

Please submit your nominations for November in the nomination boxes on the 4th or 5th floors by 10/31. Thank you.

Joke for the Season

How did Christopher Columbus finance his trip to America?

With the Discover Card.

October Monthly Happenings

October is Domestic Violence Awareness Month, National Breast Cancer Awareness, Crime Prevention, Mental Illness Awareness, Vegetarian Awareness and National AIDS Awareness Month.

October 10th is SAVE (Stop America’s Violence Everywhere) day. October 11th is National Coming Out Day, October 27th is National Make a Difference Day, and October 31st is Halloween.



Numbrix Puzzle: Starting anywhere, fill in the blank squares with the missing numbers so they make a path in numerical order, 1 through 49. You can work horizontally or vertically in any direction. Diagonal paths are not allowed.

62	63	64	1	2	7	8	9
61							10
48							13
47							14
44							15
43							16
40							17
39	38	37	32	31	30	19	18